



ASSOCIATION FOR WATER AND RURAL DEVELOPMENT

PHYSICAL ADDRESS  
No. 14 Safari Junction,  
Hoedspruit, 1380

POSTAL ADDRESS  
PO Box 1919,  
Hoedspruit, 1380

PHONE & FAX  
Tel: + 27 (0)15 793 0503/ 0145  
Fax: 086 244 7106

WEB & EMAIL  
www.award.org.za  
info@award.org.za

Company Reg. No. 98/03011/08  
Non profit org. Reg. No. 006 - 821

## YOUR ROLE IN THE PROGRAMME

We need to work with people who have expertise, experience and understanding of the biodiversity sector and water resources management in the Limpopo River Basin to help us profile the catchment. We want to better understand **INSTITUTIONS, PRACTICES, STRATEGIES, APPROACHES** and the role that these play in sustaining river flows in the Lowveld.

A researcher will be contacting you to discuss an opportunity to meet. Your input is appreciated

For more information, contact [info@award.org.za](mailto:info@award.org.za)

The **OLIFANTS** and its contributing waterways are critical for supporting life in Yet unchecked pollution, inappropriate land and resource use, weak and poorly enforced policies and regulations, and poor protection of habitats and biodiversity are degrading the Olifants at an alarming rate

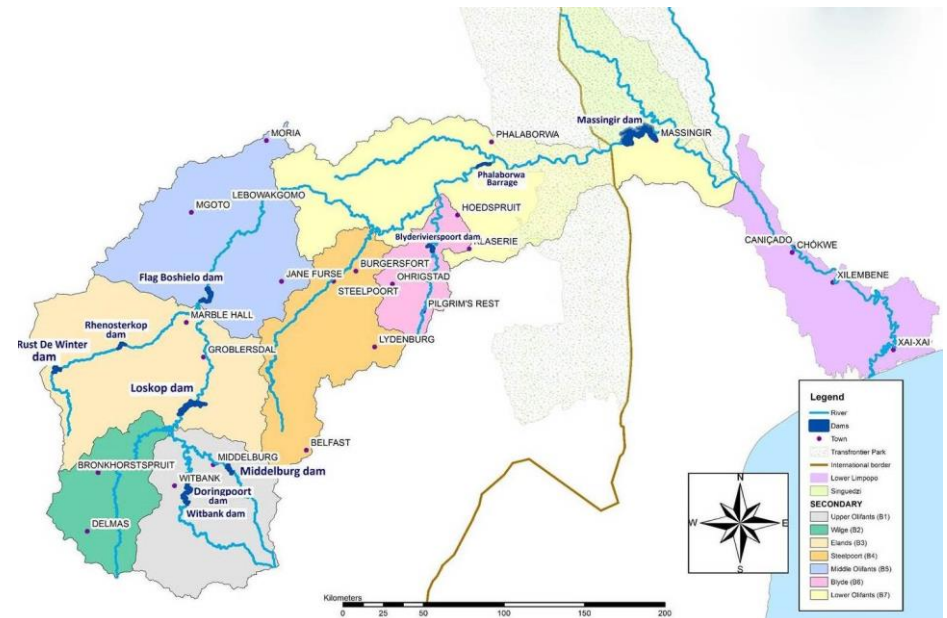
## FACT SHEET

# RESILIM O

RESILIENCE IN THE LIMPOPO BASIN PROGRAMME OLIFANTS CATCHMENT

**APPROACH:** **USAID: RESILIM O** is a 5 year programme implemented by the **ASSOCIATION FOR WATER AND RURAL DEVELOPMENT (AWARD)** to support a more resilient Olifants Catchment in **SOUTH AFRICA** and **MOZAMBIQUE**

**OBJECTIVE:** To **REDUCE VULNERABILITY** by building **IMPROVED TRANSBOUNDARY GOVERNANCE** and management of the Olifants Catchment so as to enhance the **RESILIENCE** of its people and ecosystems through systemic and social learning approaches



Hydrological boundaries within the catchment

## OUTCOMES:

- Multi-scale, tenable and integrated **CLIMATE ADAPTATION** and **RESILIENCE PLANS** developed by stakeholders, tested at pilot sites and integrated into the appropriate strategies and management plans
- The development and operation of a **STRATEGIC RESILIENCE FRAMEWORK** and **ACTION PLANS** within integrated water resource management (IWRM) strategies and plans for the Olifants Basin
- The development and roll out of a strategic resilience framework for **SYSTEMIC CONSERVATION** and **SUSTAINABLE MANAGEMENT** of biodiversity and high-priority ecosystems
- **IMPROVED CAPACITY OF STAKEHOLDERS** to sustainably manage water resources and biodiversity in Olifants Basin